

Relief Sculpture

Ancient to today

What is a relief?

What is a relief?

Relief, or to raise, is to give any sculpture the impression that it is raised above the background plane.

Where do we see relief sculpture?

Where do we see relief sculpture?

trophies, buildings (architecture), decorative walls and/or memorials etc.

Materials used

- Clay (ceramic)
- Stone/rock: soap stone, marble,
- Metals: bronze, brass, copper
- Wood, bone
- Man made: plaster, plastic, concrete, recycled material



Subtractive Vs. Additive Methods

- **Subtractive**- technique performed through the taking away of material.
- **Additive**- technique that is performed through the adding of material to build up a surface.

Types of Sculpture

- Sunken Relief
- Bas-relief (low-relief)
- High-relief
- In the Round



Sunken relief

- Carved into the surface, highest area of the design is on same level as background.
- Most common in Egypt



Bas-Relief

- Shallow, just above the plane, nothing hangs off or is detached from background.







K21
L310 W240 D70



K22
L360 W255 D70



K23
L370 W365 D150



K24
L360 W290 D50



K25
L280 W260 D125



K26
L385 W280 D120



K27
L300 W230 D100



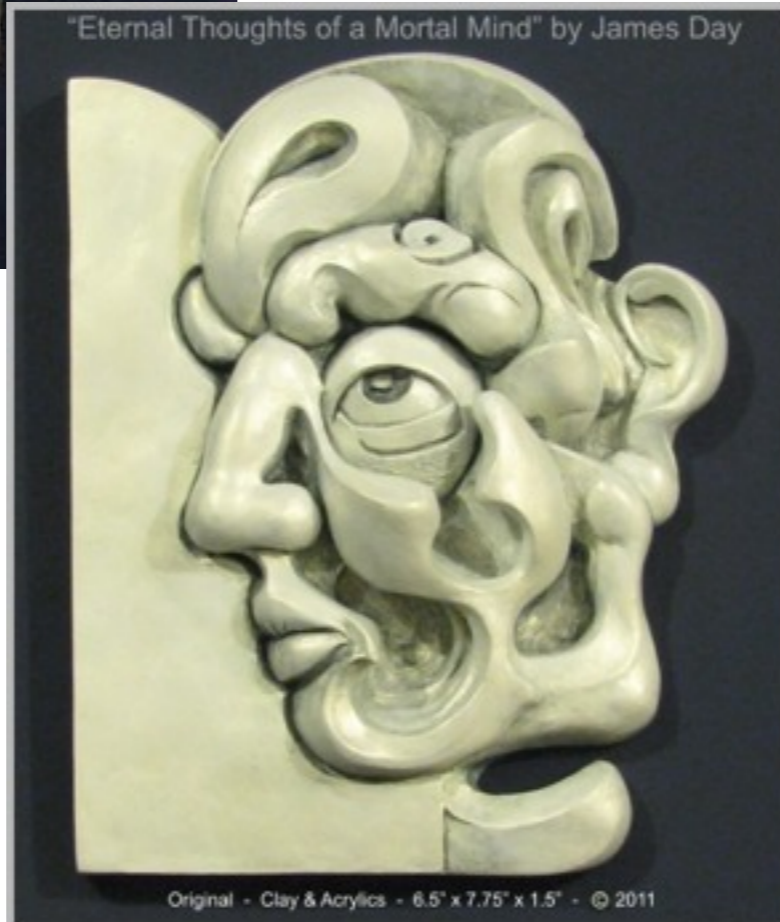
K28
L255 W245 D95



K29
L410 W300 D170



K30
L410 W300 D170



High-Relief

- Design is above the plane 50% or more, some areas may even be completely detached, but still contains a background.





In the Round

- No background is present, sculpture stands alone and a person can walk "around" the piece.





Review







